



# The Hundred of Hoo Academy

## College Model Guide Book 2021-2022

<b>Version</b>	1
<b>Policy Status</b>	
<b>Policies linked</b>	
<b>Date of Issue</b>	June 2021
<b>Date to be Revised</b>	June 2022



Neptune  
College



Athena  
College



Forseti  
College

## The College Model

From September we will introduce a small-school model of education. This takes a human-scale approach which ensures that the quality of care, guidance and support for every child is as effective as possible.

Primaries, by their nature, are smaller organisations where every child is known as an individual. However, in larger secondary academies, this crucial sense of being known and understood can be lost amongst a more numerous cohort of pupils. The small-school approach ensures that this is never the case.

This approach has several advantages. It ensures that younger secondary-age pupils belong to smaller units where they become known as individuals within a strong family-like environment. This is similar to what they were used to at primary level. However, at the same time they enjoy access to the full range of resources and facilities available in dynamic secondary environments such as science laboratories, art and design workshops and sports halls.

## The College Names

Staff and students were surveyed and Gods and Goddesses were the most popular vote, with famous people from subjects areas as a close second place.

A God/Goddess was selected from three mythologies.

### **Neptune College**

Named after the Roman God of the Sea, this is poignant to our community as the Hoo peninsula is surrounded by The River Thames and Medway. He also had the ability to speak with all sea creatures which links to the language acquisition within the MYP, which provides students with the opportunity to develop insights into the features, processes and craft of language and the concept of culture.

### **Athena College**

Named after the Greek Goddess of Wisdom and sponsor of arts and strategy. Athena was always depicted with the 'owl of Athena', which was her source of knowledge. This Goddess was picked as it links to our 'knowledge rich' curriculum.

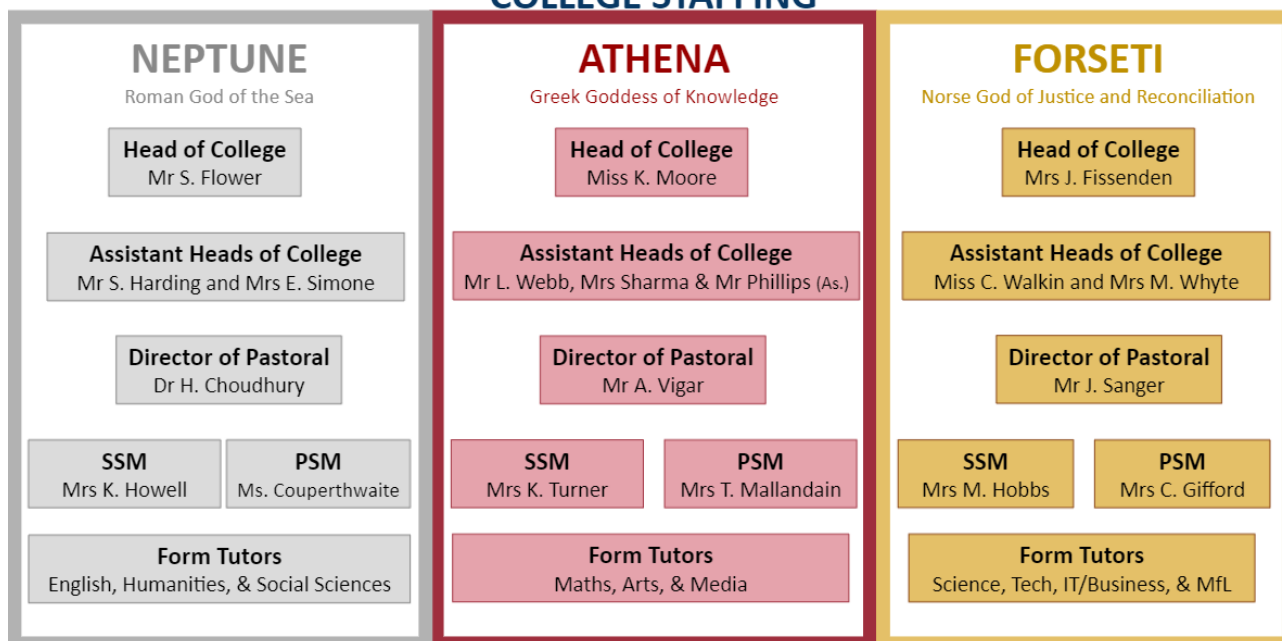
### **Forseti College**

Named after the god of justice and reconciliation in Norse mythology. This God links well with our IB learner profile attributes in developing principled and self-regulated students.

## The College Teams

The Head of College leads the team of college staff and takes responsibility for the pastoral care of all pupils within their College, supporting the removal of any barriers to their students' learning.

### COLLEGE STAFFING



The VP will hold overall responsibility for all pupils but takes a lead focus on Year 11. Each AP will be responsible for 2 year groups within each College. We will aim for APs to follow each year group through until the end of year 10.

With Jenny on Maternity leave Kelly Moore will take the lead of Forseti College and Lee Webb for Athena College. The College responsibilities are outlined below:

### September 2021 - December 2021

Neptune	Athena	Forseti
Mr S. Flower - Y11	Mr L Webb - Y11 and Y10	Miss K Moore - Y11
Mrs E. Simone - Y7 and Y9	Mrs S Sharma Y7 and Y8	Mrs M Whyte Y7 and Y9
Mr S. Harding Y8 and Y10	Mr R Phillips Y9	Miss C Walkin Y8 and Y10

**From January 2022, when Jenny Fissenden returns from Maternity leave**

Neptune	Athena	Forseti
Mr S. Flower - Y11	Miss K Moore - Y11	Mrs J Fissenden - Y11
Mrs E. Simone - Y7 and Y9	Mr L Webb Y7 and Y10	Mrs M Whyte Y7 and Y9
Mr S. Harding Y8 and Y10	Mrs S Sharma: Y8 Mr R Phillips: Y9	Miss C Walkin Y8 and Y10

The Director of Pastoral will ensure that the pastoral process is being followed consistently within their College and will take responsibility for mentoring and ‘regularly checking in’ with a group of identified students across year groups across the college. They could be selected from disadvantaged students, boys, HPAs, as is appropriate across the individual college. The DOP will be the lead on ensuring that the identified students have no barriers to their success.

The SSM will field all parental queries and any that cannot be resolved by them or the PSM will then be directed to the relevant person within each department or college. The PSM will also intercept and resolve issues throughout the day as well as support patrol.

Sixth Form are included in the College model, with some differences compared with other year groups. The Director of Sixth-Form, Chloe Solly will still have overall responsibility for 6th form within each small school, although pastoral issues will still be addressed through the College teams initially. Kelly Moore will continue to oversee the 6th Form.

### Raising Pastoral Concerns

Each college will have an email distribution that has in it the VP, APs, DOP, SSM, PSM.

### Assemblies

Each college will have an assembly once per fortnight that will follow the TOTF program. There may be College assemblies on alternate weeks for rewards and for delivery of other key pupil updates. Each year group will also have 1 year group assembly per term. We also hold the right to hold a year group assembly as needs arise and details of how this will work will be in the Pastoral Handbook.

### The Pastoral (Reset) Room

This will run the same as this year but will be supported by the PSMs when they are not on patrol/supporting pupils. The location will be the new room where T1 was situated so the SSMs and PSMs can work collaboratively.

### Detentions

These will be run by the college using a similar rota to the one held within year groups this year but there will be 4 form tutors per night.

Late detentions will still be sat at lunch and will be held in T1 with PSMs.

### Departments in each College

Neptune	Athena	Forseti
English	Maths	Science
Humanities	Arts (Visual and Perf)	Tech
Social Sciences	Media	IT/Business
		MFL

PE will be split across all 3 colleges, and will be involved in delivering lunch time clubs and competitions.

## Form Groups

The attached [form tutor document](#) identifies if you are a year 7-10 vertical tutor, year 11 tutor or 6th form tutor.

## Operation information

### Lessons

Year 7 and 8 will be taught in College bands, but from year 9 upwards they will be set across two bands with a mix of Colleges in each class.

### Lineup Positions

**Neptune** - Humanities playground **Athena** - Front playground English end  
**Forseti** - Front playground Reception end

- *Year 11 Afternoon - This will be on the astro so that we can pull out interventions and will be run by Mr Flower, Mr Vigar and heads of core.*
- *Sixth Form - These will not lineup but will go straight to their form room. Sixth Form briefings will be introduced twice per week.*

### Break Time Areas - (These will be by year group.)

- Year 7** - Social Space (old student services area)
- Year 8** - Humms (History) and Exam Hall outdoor area
- Year 9** - Humms (Geography) and playground
- Year 10** - English area
- Year 11** - Maths Block
- Sixth Form** - Sixth form social space or canteen

### Lunch Time Areas and Times

- Neptune** - Social Space (old student services)
- Athena** - Maths block
- Forseti** - Social Space (old student services)
- Sixth Form** - Sixth form social space or canteen

College	Neptune	Athena	Forseti	Sixth Form
<b>1:00-1:30</b>	Lunch	Lunch	Form	Form
<b>1:30-2:00</b>	Form	Form	Lunch	Lunch

*Please see below for altered timings for Wednesdays.*

## Wednesday Early Finish

The times of the days haven't changed except for Wednesday which has the schedule below:

Wednesdays	
Pupils Line up	8:25-8:40
Period 1	8:40-9:40
Period 2	9:40-10:40
break	10:40-11:00
Period 3	11:00-12:00
Lunch 1 / Tutor / Assembly	12:00-12:30
Lunch 2 / Tutor / Assembly	12:30-13:00
Period 4	13:00-13:55*

*\*Tannoy at 13:55, students escorted to line-up with buses departing at 14:05*